



# Perspective Concrete Roof Tiles



**BMI** Coverland

[www.bmigroup.com/za](http://www.bmigroup.com/za)



A lot can change in 30 years, but your roof doesn't have to. With a track record of just over 70 years and the backing of BMI Technical Centre, we are proud to introduce our **30 Year Functional Concrete Guarantee**.

Your roof is your protection from the elements, your shelter and with our guarantee, your peace of mind. Our concrete range is guaranteed against the event of damage to the weather resistance of the product resulting from a manufacturing defect. In the unlikely event that damage occurs, BMI Coverland will repair the affected product for the lifetime of the guarantee.

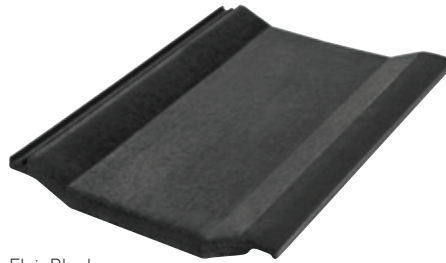
## #becauseitsneverjustarroof



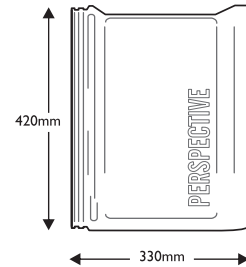
### INTENSE PRODUCT TESTING

Our roofing products are tested in a wind tunnel unique to the industry, simulating wind and rain conditions found in a wide range of climate zones worldwide, including situations which typically arise only every 50 years. BMI only releases the new roofing materials when all trials as well as several hardness and long-term ageing tests have been successful.

**Ultra-modern with an undulating contour, the Perspective is a superior choice that melds a smooth aesthetic with solid functionality.**



Flair Black



### TECHNICAL DATA

Overall size of tile (mm)	420 x 330
Approx mass per tile (kg)	4.6
Linear cover per tile (mm)	300

### STRUCTURAL DATA

*The roof structure specifications should comply with the regulations in your area.*

Minimum pitch requirements	17° to 25°	26° and over
Rafter Centres	Up to 760 mm 38 x 38 Batten	Up to 950 mm 38 x 50 mm Batten on edge
Headlap (mm)	100	75
Batten Centres (mm)	320	345
Batten per m <sup>2</sup> (m)	3.13*	2.9*
Number of tiles per m <sup>2</sup>	10.42	9.66
Approx mass of tile m <sup>2</sup> (kg)	52	44
Undertile Membrane/ Radenshield™ recommended at all pitches	Mandatory	Mandatory

\* No allowance for wastage.

### SECURE YOUR ROOF

BMI Coverland offers quick and easy to install storm clips and nails for fast and professional securing of concrete and clay tiles. Our clips match the respective tile profiles exactly to provide reliable and durable protection against wind upliftment and slipping with an added security benefit against intruders entering the roof. See our Technical Guide for your area's specifications.

DISCLAIMER: The colour of these illustrations may vary due to the printing process. BMI Coverland recommends that you view actual tile samples before reaching a purchase decision. Special colours are available on request at a minimum quantity order. **30 year functional guarantee:** T's & C's apply. For more information please contact your sales representative or email us at [info.sa@bmiigroup.com](mailto:info.sa@bmiigroup.com)



## TILE FINISHES

### Through Colour

A single-shaded base colour throughout the roof tile displays a distinct surface.

### Farmhouse

The through colour tile is accentuated by a second colour, randomly applied to give it a natural rustic appearance.

### Vivid

Our vivid tiles have an enriched body colour without the addition of a coating. Available in all standard colours shown.

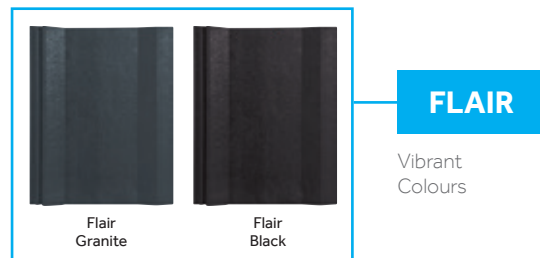


Farmhouse White

## PREMIUM COATED FINISHES

### Flair

A double coating ensures your tiles have a rich vibrant appearance.





# Coverland

## BRANCHES

<b>Bloemfontein</b>	051 492 0210
<b>Brits</b>	010 492 8800
<b>Cape Town</b>	021 492 2230
<b>Durban</b>	031 565 3260
<b>East London</b>	043 492 0041
<b>Germiston</b>	010 492 8780
<b>Isipingo</b>	031 489 9862
<b>Nelspruit</b>	013 492 1930
<b>Pietermaritzburg</b>	031 489 9880
<b>Polokwane</b>	015 495 0070
<b>Port Elizabeth</b>	041 492 0130
<b>Richards Bay</b>	035 797 2160

### **BMI Coverland (Pty) Ltd**

Block 6  
Constantia View Office Estate  
2 Hogsback Avenue  
Quellerina  
011 222 7300  
info.sa@bmigroup.com

[www.bmigroup.com/za](http://www.bmigroup.com/za)

As of April 2017, Coverland forms part of the BMI Group. The BMI Group, a Standard Industries company, is the largest manufacturer of flat and pitched roofing and waterproofing solutions throughout Europe. With 128 production facilities and operations in Europe, parts of Asia and South Africa, the company brings more than 165 years of experience. For more information visit [www.bmigroup.com](http://www.bmigroup.com)

Our expertise and innovations are bringing advantages in sustainability, performance and architectural design to residential, commercial, and public sector projects. Our product offering integrates functionality, energy efficiency and aesthetics for the homeowner. As the largest concrete roof tile manufacturer in Southern Africa, our reach expands across 7 production facilities and 5 depots nationally.