

Icopal Limited
BMI House
2 Pitfield
Kiln farm
Milton Keynes MK11 3LW

Tel: +44(0) 1908 015760
e-mail: technical.uk@bmgigroup.com
website: www.icopal.co.uk



Agrément Certificate

10/4739

Product Sheet 1

ICOPAL SINGLE-PLY ROOF WATERPROOFING SYSTEMS

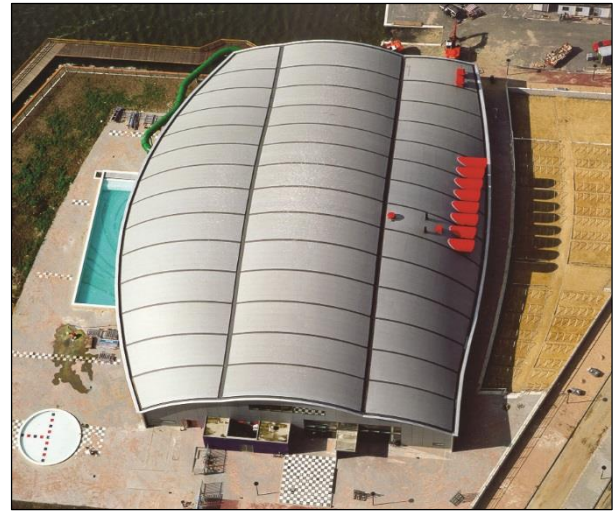
MONARPLAN FM SINGLE-PLY PVC ROOF WATERPROOFING MEMBRANES

This Agrément Certificate Product Sheet⁽¹⁾ relates to Monarplan FM Single-Ply PVC Roof Waterproofing Membranes, for use as mechanically fastened roof waterproofing membranes on flat or pitched roofs with limited access.

(1) Hereinafter referred to as 'Certificate'.

CERTIFICATION INCLUDES:

- factors relating to compliance with Building Regulations where applicable
- factors relating to additional non-regulatory information where applicable
- independently verified technical specification
- assessment criteria and technical investigations
- design considerations
- installation guidance
- regular surveillance of production[†]
- formal three-yearly review.[†]



KEY FACTORS ASSESSED

Weathertightness — the membranes will resist the passage of moisture into the building (see section 6).

Properties in relation to fire — the membranes can enable a roof to be unrestricted under the national Building Regulations (see section 7).

Resistance to wind uplift — the membranes will resist the effects of any likely wind suction acting on the roof (see section 8).

Resistance to mechanical damage — the membranes will accept the limited foot traffic and loads associated with installation and maintenance (see section 9).

Durability — the membranes will have a service life in excess of 35 years (see section 11).



The BBA has awarded this Certificate to the company named above for the products described herein. These products have been assessed by the BBA as being fit for their intended use provided they are installed, used and maintained as set out in this Certificate.

On behalf of the British Board of Agrément

Date of Fourth issue: 4 June 2019

John Albon
Chief Scientific Officer

Claire Curtis-Thomas
Chief Executive

Originally certificated on 9 March 2010

This Certificate was amended on 22 May 2024 as part of a transition of The BBA Agrément Certificate scheme delivered under the BBA's ISO/IEC 17020 accreditation. This Certificate was issued originally under accreditation to ISO/IEC 17065. Sections marked with the symbol † are not issued under accreditation. Full conversion to the ISO/IEC 17020 format will take place at the next Certificate review. The BBA is a UKAS accredited Inspection Body (No. 4345). Readers MUST check the validity of this Agrément Certificate by either referring to the BBA website or contacting the BBA directly. Any photographs are for illustrative purposes only, do not constitute advice and must not be relied upon.

British Board of Agrément

Bucknalls Lane
Watford
Herts WD25 9BA

©2019

tel: 01923 665300
clientservices@bbacerts.co.uk
www.bbacerts.co.uk

Regulations

In the opinion of the BBA, Monarplan FM Single-Ply PVC Roof Waterproofing Membranes, if installed, used and maintained in accordance with this Certificate, can satisfy or contribute to satisfying the relevant requirements of the following Building Regulations (the presence of a UK map indicates that the subject is related to the Building Regulations in the region or regions of the UK depicted):



The Building Regulations 2010 (England and Wales) (as amended)

Requirement:	B4(2)	External fire spread
Comment:		The membranes, when used with a suitable surface protection, can enable a roof to be unrestricted under this Requirement. See section 7 of this Certificate.
Requirement:	C2(b)	Resistance to moisture
Comment:		The membranes, including joints, will enable a roof to satisfy this Requirement. See section 6.1 of this Certificate.
Regulation:	7	Materials and workmanship (applicable to Wales only)
Regulation:	7(1)	Materials and workmanship (applicable to England only)
Comment:		The membranes are acceptable. See section 11 and the <i>Installation</i> part of this Certificate.



The Building (Scotland) Regulations 2004 (as amended)

Regulation:	8(1)(2)	Durability, workmanship and fitness of materials
Comment:		The use of the membranes satisfies the requirements of this Regulation. See sections 10.1 and 11 and the <i>Installation</i> part of this Certificate.
Regulation:	9	Building standards applicable to construction
Standard:	2.8	Spread from neighbouring buildings
Comment:		The membranes, when used with a suitable surface protection, can be regarded as having low vulnerability under clause 2.8.1 ⁽¹⁾⁽²⁾ of this Standard. See section 7 of this Certificate.
Standard:	3.10	Precipitation
Comment:		The membranes, including joints, will enable a roof to satisfy the requirements of this Standard with references to clauses 3.10.1 ⁽¹⁾⁽²⁾ and 3.10.7 ⁽¹⁾⁽²⁾ . See section 6.1 of this Certificate.
Standard:	7.1(a)	Statement of sustainability
Comment:		The membranes can contribute to meeting the relevant requirements of Regulation 9, Standards 1 to 6 and therefore will contribute to a construction meeting a bronze level of sustainability as defined in this Standard.
Regulation:	12	Building standards applicable to conversions
Comment:		Comments in relation to the products under Regulation 9, Standards 1 to 6 also apply to this Regulation, with reference to clause 0.12.1 ⁽¹⁾⁽²⁾ and Schedule 6 ⁽¹⁾⁽²⁾ .

(1) Technical Handbook (Domestic).

(2) Technical Handbook (Non-Domestic).



The Building Regulations (Northern Ireland) 2012 (as amended)

Regulation:	23(a)(i)	Fitness of materials and workmanship
Comment:	(iii)(b)(i)	The membranes are acceptable. See section 11 and the <i>Installation</i> part of this Certificate.

Regulation:	28(b)	Resistance to moisture and weather
Comment:		The membranes, including joints, can enable a roof to satisfy the requirements of this Regulation. See section 6.1 of this Certificate.
Regulation:	36(b)	External fire spread
Comment:		The membranes, when used with a suitable surface protection, can enable a roof to be unrestricted under this Requirement. See section 7 of this Certificate.

Construction (Design and Management) Regulations 2015 Construction (Design and Management) Regulations (Northern Ireland) 2016

Information in this Certificate may assist the client, designer (including Principal Designer) and contractor (including Principal Contractor) to address their obligations under these Regulations.

See sections: 1 *Description* (1.2) and 3 *Delivery and site handling* (3.3) of this Certificate.

Additional Information

NHBC Standards 2019

In the opinion of the BBA, Monarplan FM Single-Ply PVC Roof Waterproofing Membranes, if installed, used and maintained in accordance with this Certificate, can satisfy or contribute to satisfying the relevant requirements in relation to *NHBC Standards*, Chapter 7.1 *Flat roofs and balconies*.

CE marking

The Certificate holder has taken the responsibility of CE marking the products, in accordance with harmonised European Standard BS EN 13956 : 2012. An asterisk (*) appearing in this Certificate indicates that data shown are given in the manufacturer's Declaration of Performance.

Technical Specification

1 Description

1.1 Monarplan FM Single-Ply PVC Roof Waterproofing Membranes are polyester-reinforced, flexible, polyvinyl chloride (PVC) single-ply roof waterproofing membranes.

1.2 The nominal characteristics of the membranes are:

Thickness* (mm)	1.2, 1.5 and 1.8
Width* (m)	1.65 and 2.12
Length* (m)	15 and 20
Mass per unit area* (kg·m ⁻²)	1.575 (1.2 mm), 1.95 (1.5 mm) and 2.34 (1.8 mm)
Tensile strength* (N·50 mm ⁻¹)	1100
Elongation at break* (%)	15
Tear strength* (N)	200
Low temperature foldability* (°C)	-25
Colour	
lower side	standard grey (RAL 7001)
upper side	standard grey (RAL 7001), anthracite grey (RAL 7015), stone red (RAL 3011), white (RAL 9010), blue (RAL 5005), green (RAL 6004) and turquoise green (RAL 5018).

1.3 Ancillary items for use with the membranes, but which are outside the scope of this Certificate, include:

- PVC coated metal — a 0.6 mm galvanized steel sheet, coated with 0.6 mm of Monarplan PVC compound for use in detailing
- Monarplan PVC Internal and External Corners — prefabricated corner units

- polyester fleeces 120 and 300 g·m⁻² — for use as a separation layer for mechanical and chemical protection
- glass fleece 120 g·m⁻² — for use as a separation layer between the membranes and EPS insulation boards
- mechanical fasteners and tubular washers.

2 Manufacture

2.1 The membranes are manufactured by a two-pass extrusion coating process of the polyester reinforcement.

2.2 As part of the assessment and ongoing surveillance of product quality, the BBA has:

- agreed with the manufacturer the quality control procedures and product testing to be undertaken
- assessed and agreed the quality control operated over batches of incoming materials
- monitored the production process and verified that it is in accordance with the documented process
- evaluated the process for management of nonconformities
- checked that equipment has been properly tested and calibrated
- undertaken to carry out the above measures on a regular basis through a surveillance process, to verify that the specifications and quality control operated by the manufacturer are being maintained.

3 Delivery and site handling

3.1 The membranes are delivered to site in rolls wrapped in polythene, on pallets with labels bearing the manufacturer's name and address, product identification, dimensions, batch number and the BBA logo incorporating the number of this Certificate.

3.2 Rolls should be stored on their side, on a clean, level surface and under cover.

3.3 The Certificate holder has taken the responsibility of classifying and labelling the products under the *CLP Regulation (EC) No 1272/2008 on the classification, labelling and packaging of substances and mixtures*. Users must refer to the relevant Safety Data Sheet(s).

Assessment and Technical Investigations

The following is a summary of the assessment and technical investigations carried out on Monarplan FM Single-Ply PVC Roof Waterproofing Membranes.

Design Considerations

4 General

4.1 Monarplan FM Single-Ply PVC Roof Waterproofing Membranes are satisfactory for use as a mechanically fixed waterproofing layer on flat and pitched roofs with limited access.

4.2 Limited access roofs are defined for the purpose of this Certificate as those subjected only to pedestrian traffic for maintenance of the roof covering, cleaning of gutters etc. Where traffic in excess of this is envisaged, such as pedestrian access roofs, additional protection to the membrane must be provided (see section 9 of this Certificate and the relevant clauses of the Certificate holder's installation instructions).

4.3 Flat roofs are defined for the purpose of this Certificate as those having a minimum finished fall of 1:80⁽¹⁾. For design purposes, twice the minimum finished fall should be assumed unless a detailed analysis of the roof is available, including overall and local deflection, direction of falls, etc. Pitched roofs are defined for the purpose of this Certificate as those having a fall in excess of 1:6.

(1) *NHBC Standards 2019* require a minimum fall of 1:60 for green roofs and roof gardens.

4.4 Decks to which the products are to be applied must comply with the relevant requirements of BS 6229 : 2018, BS 8217 : 2005 and, where appropriate, *NHBC Standards 2019*, Chapter 7.1.

4.5 Insulation materials used in conjunction with the products must be either:

- as described in BS 8217 : 2005, or
- the subject of a current BBA Certificate and used in accordance with, and within the limitations of, that Certificate.

4.6 Contact with bituminous, coal tar and oil-based products must be avoided as the membranes are not compatible with lower grades of bitumen. If contact with such products is likely, a separating layer must be interposed before installing the waterproofing sheet. Where doubt arises, the advice of Certificate holder must be sought.

5 Practicability of installation

Installation of the membranes must only be carried out by installers trained and approved by the Certificate holder.

6 Weathertightness



6.1 The membranes, including joints, when completely sealed and consolidated, will adequately resist the passage of moisture into the building and enable a roof to comply with the requirements of the national Building Regulations.

6.2 The membranes are impervious to water and will provide a weathertight roof capable of accepting minor structural movement.

7 Properties in relation to fire



7.1 When tested in accordance with DD CEN/TS 1187 : 2012, Test 4, a system comprising an 18 mm plywood deck, a plastic vapour control layer, a 120 mm thick polyisocyanurate insulation and a layer of 1.2 mm Monarplan FM, when classified to BS EN 13501-5 : 2005⁽¹⁾, achieved a B_{ROOF}(t4) classification⁽²⁾.

- (1) Report reference P101247-1013-3, conducted by the Building Research Establishment. Report available from the Certificate holder.
(2) Report reference P101247-1013-2, conducted by the Building Research Establishment. Report available from the Certificate holder.

7.2 The designation of other specifications should be confirmed by:

England and Wales — test or assessment in accordance with Approved Document B, Appendix A, Clause A1
Scotland — test by a UKAS accredited laboratory to conform to Mandatory Standard 2.8, clause 2.8.1⁽¹⁾⁽²⁾

- (1) Technical Handbook (Domestic).
(2) Technical Handbook (Non-Domestic).

Northern Ireland — test or assessment carried out by a UKAS-accredited laboratory or an independent consultant with appropriate experience.

8 Resistance to wind uplift

8.1 The resistance to wind uplift of the membranes is provided by mechanical fasteners secured to the deck and passing through the membranes. The number of fixings will depend on a number of factors, including:

- wind uplift forces to be resisted
- elastic limit of the membrane
- pull-out strength of fasteners
- appropriate safety factors.

8.2 The wind uplift forces are calculated in accordance with BS EN 1991-1-4 : 2005 and its UK National Annex. On this basis, the number of fixings required should be established using a maximum permissible load of 0.6 kN per fixing.

8.3 Wind uplift load results from testing on installed systems are given in Table 1.

Table 1 Wind uplift load results

System	Corrected load per fixings (N)
1 ⁽¹⁾	600
2 ⁽²⁾	600
3 ⁽³⁾	780
4 ⁽⁴⁾	660

(1) Sample tested comprised: 0.75 mm thick profiled steel deck, 100 mm of mineral wool insulation fastened with two fasteners per board with 1.2 mm Monarplan FM, width 1060 mm, mechanically fastened at 250 mm centres using 4.8 mm by 140 mm fasteners and 82 mm by 40 mm metal plates.

(2) Sample tested comprised: 0.75 mm thick profiled steel deck, 100 mm of mineral wool insulation fastened with two fasteners per board with 1.2 mm Monarplan FM, width 1060 mm, mechanically fastened at 250 mm centres using 4.8 mm by 140 mm fasteners and plastic plates.

(3) Sample tested comprised: 0.75 mm thick profiled steel deck, 100 mm of mineral wool insulation fastened with two fasteners per board with 1.2 mm Monarplan FM, width 1500 mm, mechanically fastened at 250 mm centres using 4.8 mm by 140 mm fasteners and 82 mm by 40 mm metal plates.

(4) Sample tested comprised: 0.75 mm thick profiled steel deck, 100 mm of mineral wool insulation fastened with two fasteners per board with 1.2 mm Monarplan FM, width 1500 mm, mechanically fastened at 250 mm centres using 4.8 mm by 140 mm fasteners and plastic plates.

9 Resistance to mechanical damage

9.1 The membranes can accept the limited foot traffic and light concentrated loads associated with installation and maintenance. Reasonable care should be taken to avoid puncture by sharp objects or concentrated loads.

9.2 Where regular traffic is envisaged, such as for maintenance of lift equipment, a walkway should be provided using concrete slabs supported on bearing pads or an anti-slip walkway with or without a protection sheet. The advice of the Certificate holder should be sought on the most appropriate method to be used with the amount of traffic involved.

10 Maintenance



10.1 The roof system must be the subject of biannual inspections and maintenance in accordance with BS 6229 : 2018, Chapter 7.

10.2 Where damage has occurred it should be repaired in accordance with section 15 and the Certificate holder's instructions.

11 Durability



Under normal service conditions, the membranes will have a service life in excess of 35 years.

12 Reuse and recyclability

The products comprise PVC and polyester, which can be recycled.

Installation

13 General

13.1 Installation of Monarplan FM Single-Ply PVC Roof Waterproofing Membranes must be carried out in accordance with the relevant clauses of the Certificate holder's instructions, BS 8000-0 : 2014, BS 8000-4 : 1989 and this Certificate.

13.2 Conditions on site should be those for normal roof waterproofing work. Deck surfaces must be dry, clean and free from sharp projections such as nail heads and concrete nibs. When used over a rough substrate, a suitable protection layer should be placed over the substrate.

13.3 Installation should not be carried out during wet weather (eg rain, fog or snow) nor when the temperature is below 0°C, unless suitable precautions against surface condensation are taken in accordance with the Certificate holder's instructions.

13.4 When used over bitumen, bitumen-bound insulation products, coal tar, pitch or oil-based products, a separation layer must be interposed between the substrate and the membranes. In cases of doubt, the advice of the Certificate holder should be sought.

14 Procedure

14.1 The membranes are unrolled onto the substrate without undulations, with 110 mm minimum side laps and 50 mm minimum end laps.

14.2 The membranes are fixed to the deck (through insulation boards, where appropriate) in the joint overlaps prior to welding of the seams in accordance with the Certificate holder's instructions.

14.3 The membranes are fixed at the edges by mechanically fastening using flatbar, PVC coated metal or by hot-air welding.

Hot-air welding

14.4 Joints are made using either automatic or hand-operated machines with the temperature set in accordance with the Certificate holder's instructions.

14.5 The lap area must be dry and clean. If the membrane in the weld area has become contaminated, it must be cleaned in accordance with the Certificate holder's instructions.

14.6 The welded width of the joint must be a minimum of 40 mm for field welds and detailing. Care should be taken that overheating of the membrane does not occur, as possible impairment of the membrane may result.

14.7 Flashings are to be formed in accordance with the Certificate holder's instructions.

14.8 The seam is tested with a metal probe to highlight poorly welded areas. Any such areas must be made good using hot-air welding.

15 Repair

In the event of damage, repairs can be carried out by cleaning around the damaged area and applying a patch of the appropriate membrane in accordance with the Certificate holder's instructions.

Technical Investigations

16 Tests

16.1 Tests were conducted on Monarplan FM Single-Ply PVC Roof Waterproofing Membranes and the results assessed to determine:

- tensile strength and elongation
- dimensional stability
- low temperature foldability
- shear strength of joints
- peel strength
- interlaminar peel strength
- wind loading per fastener
- static indentation
- dynamic indentation
- water vapour transmission
- vapour resistance

- resistance to water pressure
- percentage weight loss
- water absorption
- percentage plasticiser
- effects of long-term heat ageing
- effects of long-term UV ageing.

16.2 Samples of 1.2 mm Monarplan FM were taken from an existing site more than 35 years old, and tests were conducted and the results assessed to determine:

- thickness
- mass per unit area
- low temperature foldability
- dynamic indentation.

17 Investigations

17.1 An assessment was made of existing data on fire performance to DD CEN/TS 1187 : 2012, Test 4 (see section 7.1 of this Certificate).

17.2 An assessment was made of existing data on fire performance to ENV 1187 : 2002, Test 3. The classification to BS EN 13501-5 : 2005 is B_{ROOF}(t3).

17.3 The manufacturing process was evaluated, including the methods adopted for quality control, and details were obtained of the quality and composition of the materials used.

17.4 Visits to existing sites, one installed during the mid-1970s and two during the early 1990s, were carried out and samples were taken to assess the durability of the products under normal service conditions.

Bibliography

BS 6229 : 2018 *Flat roofs with continuously supported flexible waterproof coverings — Code of practice*

BS 8000-0 : 2014 *Workmanship on construction sites – Introduction and general principles*

BS 8000-4 : 1989 *Workmanship on building sites — Code of practice for waterproofing*

BS 8217 : 2005 *Reinforced bitumen membranes for roofing — Code of practice*

BS EN 1991-1-4 : 2005 + A1 : 2010 *Eurocode 1 : Actions on structures — General actions — Wind actions*

NA to BS EN 1991-1-4 : 2005 + A1 : 2010 UK National Annex to *Eurocode 1 : Actions on structures — General actions — Wind actions*

BS EN 13501-5 : 2016 *Fire classification of construction products and building elements — Classification using data from external fire exposure to roof tests*

BS EN 13956 : 2012 *Flexible sheet for waterproofing — Plastic and rubber sheets for roof waterproofing — Definitions and characteristics*

DD CEN/TS 1187 : 2012 *Test methods for external fire exposure on roofs*

ENV 1187 : 2002 *Test methods for external fire exposure to roofs*

Conditions of Certificate

Conditions

1. This Certificate:

- relates only to the product that is named and described on the front page
- is issued only to the company, firm, organisation or person named on the front page – no other company, firm, organisation or person may hold or claim that this Certificate has been issued to them
- is valid only within the UK
- has to be read, considered and used as a whole document – it may be misleading and will be incomplete to be selective
- is copyright of the BBA
- is subject to English Law.

2. Publications, documents, specifications, legislation, regulations, standards and the like referenced in this Certificate are those that were current and/or deemed relevant by the BBA at the date of issue or reissue of this Certificate.

3 This Certificate will be displayed on the BBA website, and the Certificate Holder is entitled to use the Certificate and Certificate logo, provided that the product and its manufacture and/or fabrication, including all related and relevant parts and processes thereof:

- are maintained at or above the levels which have been assessed and found to be satisfactory by the BBA
- continue to be checked as and when deemed appropriate by the BBA under arrangements that it will determine
- are reviewed by the BBA as and when it considers appropriate.

4. The BBA has used due skill, care and diligence in preparing this Certificate, but no warranty is provided.

5. In issuing this Certificate the BBA is not responsible and is excluded from any liability to any company, firm, organisation or person, for any matters arising directly or indirectly from:

- the presence or absence of any patent, intellectual property or similar rights subsisting in the product or any other product
- the right of the Certificate holder to manufacture, supply, install, maintain or market the product
- actual installations of the product, including their nature, design, methods, performance, workmanship and maintenance
- any works and constructions in which the product is installed, including their nature, design, methods, performance, workmanship and maintenance
- any loss or damage, including personal injury, howsoever caused by the product, including its manufacture, supply, installation, use, maintenance and removal
- any claims by the manufacturer relating to UKCA, UKNI or CE marking.

6. Any information relating to the manufacture, supply, installation, use, maintenance and removal of this product which is contained or referred to in this Certificate is the minimum required to be met when the product is manufactured, supplied, installed, used, maintained and removed. It does not purport in any way to restate the requirements of the Health and Safety at Work etc. Act 1974, or of any other statutory, common law or other duty which may exist at the date of issue or reissue of this Certificate; nor is conformity with such information to be taken as satisfying the requirements of the 1974 Act or of any statutory, common law or other duty of care.

British Board of Agrément

1st Floor, Building 3, Hatters Lane
Croxley Park, Watford
Herts WD18 8YG

©2024

tel: 01923 665300
clientservices@bbacerts.co.uk
www.bbacerts.co.uk